



HbE heterozygous patient presenting with cold agglutinin syndrome with COVID 19 infection- Case report

Debomallya Bhuyan¹, Hughbert Dkhar², Barnali Bhuyan³, Ashutosh Kumar Singh^{3*}

¹ Head of Department, Department of Internal Medicine, Nazareth Hospital, Shillong, Meghalaya, India

² Head of Department, Department of Pathology, Nazareth Hospital, Shillong, Meghalaya, India

³ Department of Internal Medicine, Nazareth Hospital, Shillong, Meghalaya, India

Abstract

COVID 19 is rapidly spreading throughout the world. Several complications have been described which has been accompanying this infection. There have been few cases reported with autoimmune active haemolysis subsequently with COVID 19, most of them corresponding to Warm autoimmune haemolytic anemia. MRS.XX, 45 years old woman presented with complaints of generalised weakness, yellowish discoloration of skin for the last 5 days. She was incidentally found to be positive for COVID 19 after routine testing. On investigation the LFT disclosed unconjugated hyperbilirubinemia. Direct Coombs' test was found to be positive when done after washing RBC's and incubation. The patient was found to be positive for Heterozygous HbE phenotype. The patient was managed with blood transfusion and warming up the surrounding. Patient was discharged 4 days after stabilisation. This case gives positive result with conservative treatment with blood transfusion alone that to in presence of severe anemia for cold agglutinin disease presenting with COVID 19 in presence of HbE trait. This case affirms the relation between autoimmune haemolysis and COVID 19 infection. The association between HbE heterozygous with development of transient cold agglutinin disease in COVID 19 infection is yet to be ascertained.

Keywords: autoimmune haemolytic anemia, COVID 19, heterozygous HbE, cold agglutinin disease, case report

Introduction

COVID 19 has entered its third year since its beginning in 2019. The various strains have affected the world having different virulence and infectivity. Initially starting from the Chinese province of Hubei and is still rapidly spreading throughout the world. With time we are becoming more aware of the various complications of the disease. There have been a few case reports of autoimmune haemolytic anaemia (AIHA) associated with COVID-19 [1]. This will be the first report of an AIHA- Cold agglutinin disease associated with this viral infection and subsequently the presence of HbE phenotype to the best of our knowledge. It is important for us to be aware of the various presentations of COVID 19 which are not typical and can cause problems for the physician initially.

Acquired haemolytic anemia can be caused by mechanical destruction of cells as seen in paraprostatic valve regurgitation and march haemoglobinuria, infection caused by malaria (most common infectious cause of haemolytic anaemia) and other bacterial and viral infections, immune haemolytic anaemias, favism, drug induced and transfusion related haemolysis [2].

Autoimmune haemolysis consists of warm autoimmune haemolytic anaemia, paroxysmal cold haemoglobinuria, cold agglutinin disease and drug or toxic agent induced. Two mechanisms are defined to explain the pathophysiology of autoimmune haemolysis. The first mechanism is known as innocent bystander effect in which the antibody is directed against certain molecule (drug/toxic substance) and in subsequent action leads to destruction of RBC's. The second mechanism consists of true autoantibody against the RBC's [2].

Unlike acquired, primary cold agglutinin disease is a rare disease. Countries of northern Europe and Atlantic have the incidence of approximately 1 to 1.8 per million and the prevalence at approximately 13 to 16 per million. Females have slightly higher prevalence than males. Median age of diagnosis is in the 60s and 70s [3].

Cold agglutinin disease is less common than warm autoimmune haemolytic anemia, approximately one-fifth to one-quarter of patients with autoimmune haemolytic anemia. The disease is also known to occur in association with lymphoid malignancies and autoimmune disorders [3].

Cold agglutinins frequently occur during the course of *M. pneumoniae* and Epstein-Barr virus infection. Case reports have described cold agglutinins with other viral infections such as rubella virus, HIV, COVID-19 infection, influenza viruses, or varicella-zoster virus [3].

All individuals who have these infections does not develop cold agglutinins and will not have clinically significant haemolysis. It usually occurs approximately two weeks after onset of the primary infection. This

condition is reported to resolve spontaneously after the resolution of infection. The blood parameters return to normal limits in few weeks to months. Cold agglutinins have also been reported in individuals with autoimmune disorders, i.e., rheumatoid arthritis and systemic lupus erythematosus (SLE) [3].

Case Report

The 45 years old lady who is resident of Meghalaya, India was referred by primary care hospital for severe anemia of unexplained origin to our hospital on 3rd of January, 2022. The lady presented with complaints of generalised weakness, yellowish discoloration of skin and eyes, increased thirst and urinary frequency for the last 5 days. She did not give any history of fever, body ache, respiratory symptoms, haematuria, pain abdomen, melena or hematemesis.

She did not have any significant similar past medical history. She was not on any prescribed drugs. No significant history of anaemia in the family. She takes mixed diet in adequate amount. There was no history of alcohol intake. She takes tobacco product since a long time.

The general examination revealed pallor. Lymph nodes or spleen were not appreciated during examination. Further physical examination was within normal limits.

The patient was tested positive for COVID 19 infection on routine testing before admission through CBNAAT. The patient was shifted to COVID ward for further evaluation. On further testing Haemoglobin was 3.8g/dL, MCV was 114 fL and corrected reticulocyte count was 6.3. PBS revealed clumping of RBC's, spherocytes, polychromatophilic cells, nucleated RBC's and a few Howell Jolly bodies. LFT revealed unconjugated hyperbilirubinemia. On routine urine examination RBCs and urobilinogen and bilirubin was reported.

The patient's blood was sent for blood grouping and matching but initially the test showed unequivocal results due to agglutination of red blood cells. After washing and incubating RBCs at 37°C, blood grouping was performed which was reported to be A1B positive. The patient's direct coomb's test came positive. Cross matching was done and compatible blood was issued and transfused to the patient. Hemoglobin chromatography was sent to rule out haemoglobinopathy which came out positive for HbE heterozygous. ANA profile was sent to rule out association with other AI disorders which came out to be negative for common antigens. The patient was not evaluated for lymphoid malignancies as the history, examination and laboratory investigations were not demonstrating any characteristics of the disease.

Cold agglutinin disease was suspected in view of COVID 19 and algorithm followed for processing of blood in laboratory. The patient was given supportive treatment. She was kept in warm environment with the help of blankets and room heater and was advised to avoid exposure to cold. She was transfused with 3 units of whole blood. The haemoglobin levels reached 8.2g/dL after the initial management. Oral glucocorticoids were started in view to prevent further deterioration of COVID 19 infection. The patient also received folate supplementation for her hemoglobin phenotype.

The patient was discharged with advice for home isolation in warm environment on the fourth day of admission and was asked to follow up after isolation.

Table 1: Liver function test findings

Bilirubin Total	5.5	0.2 - 1.3mg/dL
Bilirubin Unconjugated	4.7	0.0 - 1.1mg/dL
Bilirubin Conjugated	0.8	0.0 - 0.3mg/dL
SGPT	14	< 35 U/L
SGOT	104	14 - 36U/L
Total Protein	7.7	6.3 - 8.2g/dL
Albumin	4.2	3.5 - 5.0g/dL
Globulin	3.5	g/dL
A:G Ratio	1.2:1	1.5 - 2.0:1
Alkaline Phosphatase	67	38 - 126U/L
GGT*	23	12 - 43U/L

Table 2: Hemogram findings at the time of admission

Haemoglobin	3.8	12.5 -16.0gm%
Total WBC Count	5,040	4,000 - 11,000/cumm
Neutrophil	61	40 - 80%
Lymphocyte	34	20 - 40%
RBC	0.7	4.5 - 6.0 million/cumm
PCV	08	37 - 47 %
Reticulocyte Count	21.5	0.5 - 2.5 %
Corrected Reticulocyte Count	6.3	%
MCV	114	78 - 100fL
MCH	48	27 - 31pg
MCHC	48	32 -36 %

Table 3: Peripheral smear finding

RBC Series	RBC series show clumping with an anisocytosis, normocytic normochromic in nature with few macrocytes, ovalocytes, target cells, spherocytes, polychromatophilic cells and nucleated red blood cells.
WBC Series	WBC series are normal in total number and distribution.
Platelets	The platelets are adequate in number with a normal morphology.
Parasites	No parasite seen in the smear examined.
Impression:	The peripheral blood smear, showing a normocytic normochromic blood picture with macrocytes, spherocytes, increase polychromasia and a few Howell jolly bodies.

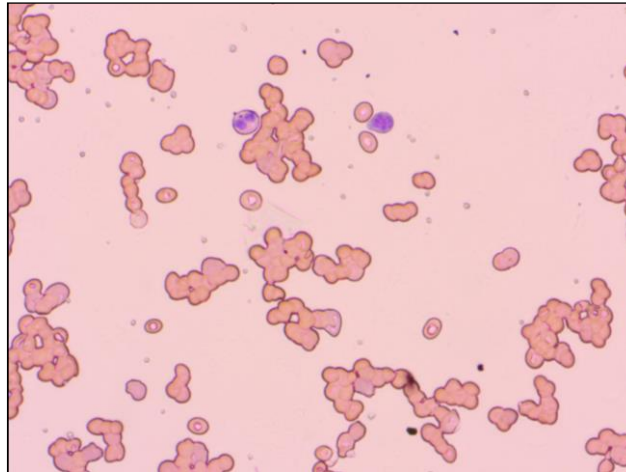
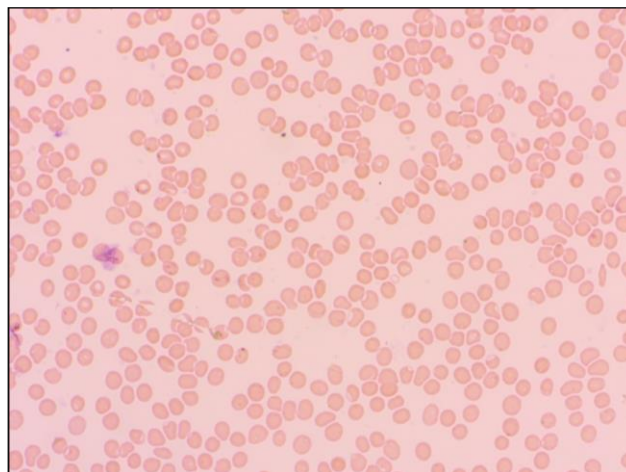
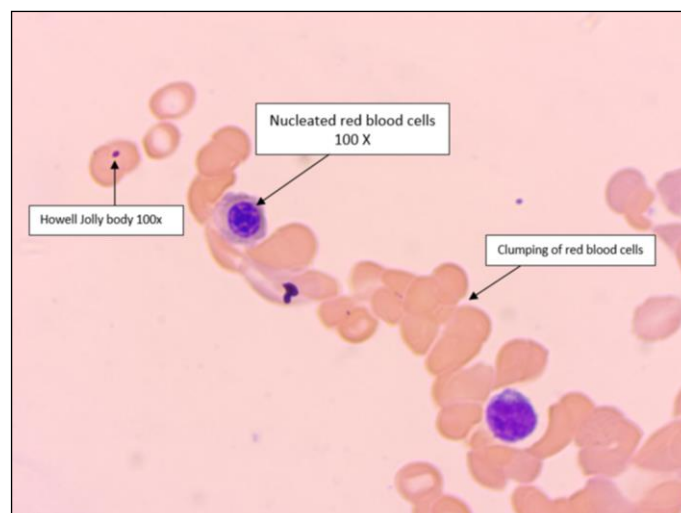
**Fig 1:** Peripheral blood smear stained with Leishman stain with Clumping of RBC at room temperature (40X)**Fig 2:** Peripheral blood smear stained with Leishman stain after Warming at 37°C, No Clumping (40x)**Fig 3:** Peripheral blood smear stained with Leishman stain (100x)



Fig 4: Peripheral blood smear stained with Leishman stain (100x)

Discussion

The patient was going through her first episode of autoimmune haemolysis in association with viral infection. Cold agglutinin disease is recognised as a chronic disease with predilection in old age population. It can also present as acute exacerbation on chronic condition in association with bacterial or viral infection. The antibody is predominant in the disease is IgM type and reacts poorly or not at all at 37°C, whereas it reacts strongly at lower temperatures that cause complement-mediated haemolysis by binding the I antigen on the red cell surface. (3) The average temperature in Meghalaya in December-January, 21-22 was 12.1°C, while minimum was 7.4°C and maximum being 16.9°C. The patient must have been exposed to SARS-CoV 2 virus in the preceding 2 weeks as the average incubation period of presentation is 9 days.

The pathophysiology of COVID-19 is not a fully established, cytokine storm with a hypercoagulable state, and an increased incidence of venous thromboembolism has been postulated. This hematologic dysfunction with proinflammatory infection conditions, as seen in COVID-19, leads to haemolysis [4].

Primary cold agglutinin disease and secondary cold agglutinin syndrome may be suspected in a patient with symptoms induced due to cold such as discomfort in the extremities with exposure to cold. Cold Agglutinin Disease should also be suspected in a patient with haemolysis or red blood cell agglutination in a blood collection tube which is cold when the peripheral blood smear reports the same. Presence of very high mean corpuscular volume is a spurious result caused by RBC agglutination which is seen in this case [3]. The present case demonstrated transient cold agglutinins and acute anemia in a patient diagnosed with SARS-CoV-2 Infection. This case has unconjugated hyperbilirubinemia as conjugated bilirubin was less than 15% of total bilirubin. The hemogram reported high reticulocyte count further confirming haemolysis. Cold agglutinin titre was not measured due to unavailability of the test but the symptoms of the patient, results of direct Coombs' test and peripheral blood smear, processing of the blood samples in warm temperature and subsequent supportive treatment given to the patient indicates towards the cold agglutinin phenotype.

Few case reports and case series have been published having cold agglutinin induced haemolysis in presence of COVID 19. In these cases, three fourth survived but one fourth expired due to haemolysis induced anemia and subsequent circulatory failure. According to reports those who improved were treated with Rituximab and DMARD's in addition to supportive care, while those who were managed with only blood transfusion did not survive [5]. The severity of anemia and haemolysis was not specified in few cases but this case further gives positive result with conservative treatment with blood transfusion alone that to in presence of severe anemia. Rituximab was not used for treatment as it can further impair the response of B cells against the SARS CoV 2 infection.

HbE variant is increasingly prevalent in South East Asia, a region endemic in malaria has been hypothesised to be providing survival advantage to the carriers of the trait with resistance to malaria, dengue virus, and very recent addition of COVID-19 infection by a study [6]. Further HbE heterozygous trait does not have any significant effect on red blood cell and its survival unless it presents in coinheritance with β thalassemia [7].

Conclusion

The case study presents the rare occurrence of cold agglutinin disease accompanying COVID 19 infection and HbE heterozygous phenotype. It also affirms that conservative treatment with blood transfusion, temperature regulation and glucocorticoids in view of COVID 19 associated inflammatory reaction can lead to positive outcome in resource limited settings.

The significance of disease in association with HbE heterozygous condition needs more reporting and further study.

References

1. Jawed M, Hart E, Saeed M. Haemolytic anaemia: a consequence of COVID-19, 2020, 10-3.
2. Luzzatto L. Hemolytic Anemias. In: Harrison's Principles of Internal Medicine. 20e ed. Mc Graw Hill Education, 2018, 708-23.
3. Berentsen S. Cold agglutinin disease. *Hematology*, 2016;2016(1):226-31.
4. Kaur J, Mogulla S, Khan R, Krishnamoorthy G, Garg S. Transient Cold Agglutinins in a Patient with COVID-19. *Cureus*, 2021, 2.
5. Ahmed Y, Khandelwal A, Walker L. Cold agglutinin disease and COVID-19 requiring therapeutic plasma exchange, *BMJ Case Reports*, 2021, 14.
6. Papadopoulos KI. A Southeast Asian Perspective on the COVID-19 Pandemic: Hemoglobin E (HbE)-Trait Confers Resistance Against COVID-19 ABCDEF 1 Konstantinos I. Papadopoulos BCDF 2 Warachaya Sutheesophon ABDE 3 Somjate Manipalviratn ADEF 4, 5 Tar-Choon Aw, 2021. [cited 2022 Feb 1]; Available from: <https://www.basic.medscimonit.com/abstract/index/idArt/929207>
7. Fucharoen S, Weatherall DJ. The Hemoglobin E Thalassemias. Available from: <http://perspectivesinmedicine.cshlp.org/>